



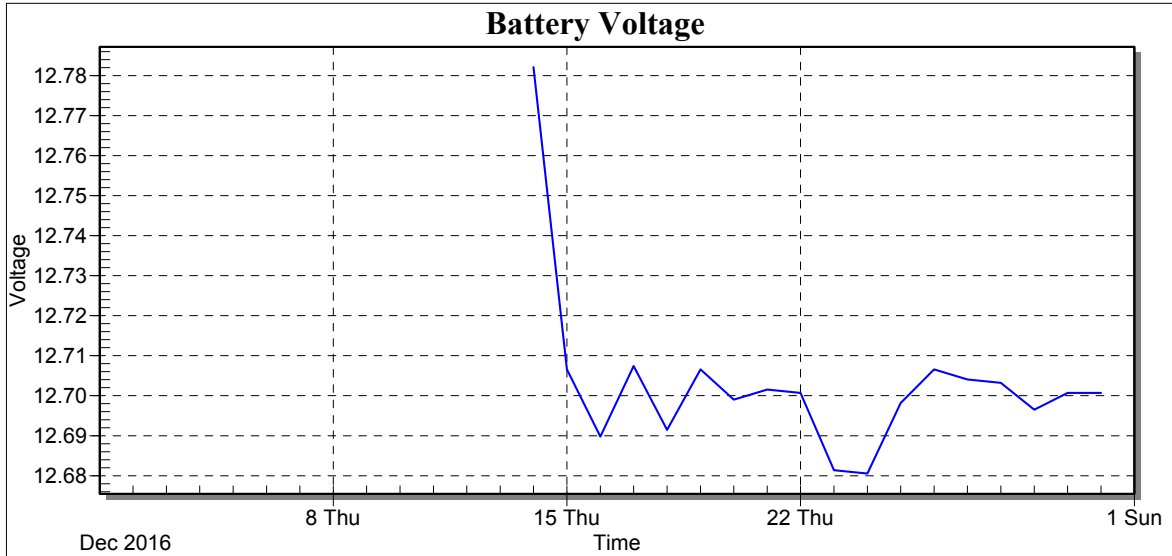
## Weather Station: CEDSA

Location: Villa Lucre

Report Type: 1 Month

Created: miércoles, 01 de marzo de 2017 7:30 p. m.

Report Period: diciembre 2016



Date	Batt Volt Min
14/12/16	12.78
15/12/16	12.71
16/12/16	12.69
17/12/16	12.71
18/12/16	12.69
19/12/16	12.71
20/12/16	12.70
21/12/16	12.70
22/12/16	12.70
23/12/16	12.68
24/12/16	12.68
25/12/16	12.70
26/12/16	12.71
27/12/16	12.70
28/12/16	12.70
29/12/16	12.70
30/12/16	12.70
31/12/16	12.70
Low	12.68
High	12.78
Average	12.70
Std Dev	0.02



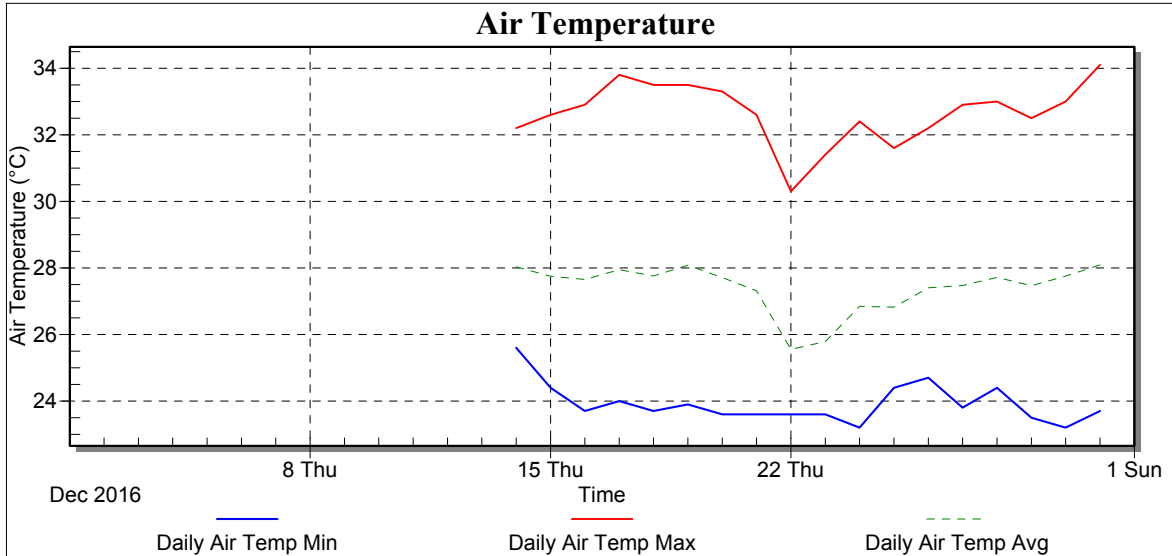
## Weather Station: CEDSA

Location: Villa Lucre

Report Type: 1 Month

Created: miércoles, 01 de marzo de 2017 7:30 p. m.

Report Period: diciembre 2016



Date	Air Temp Min (°C)	Air Temp Max (°C)	Air Temp Avg (°C)
14/12/16	25.60	32.20	28.03
15/12/16	24.40	32.60	27.75
16/12/16	23.70	32.90	27.65
17/12/16	24.00	33.80	27.95
18/12/16	23.70	33.50	27.76
19/12/16	23.90	33.50	28.08
20/12/16	23.60	33.30	27.71
21/12/16	23.60	32.60	27.31
22/12/16	23.60	30.30	25.55
23/12/16	23.60	31.40	25.79
24/12/16	23.20	32.40	26.84
25/12/16	24.40	31.60	26.82
26/12/16	24.70	32.20	27.40
27/12/16	23.80	32.90	27.47
28/12/16	24.40	33.00	27.72
29/12/16	23.50	32.50	27.46
30/12/16	23.20	33.00	27.75
31/12/16	23.70	34.10	28.09
Low	23.20	30.30	25.55
High	25.60	34.10	28.09
Average	23.92	32.66	27.40
Std Dev	0.57	0.89	0.71



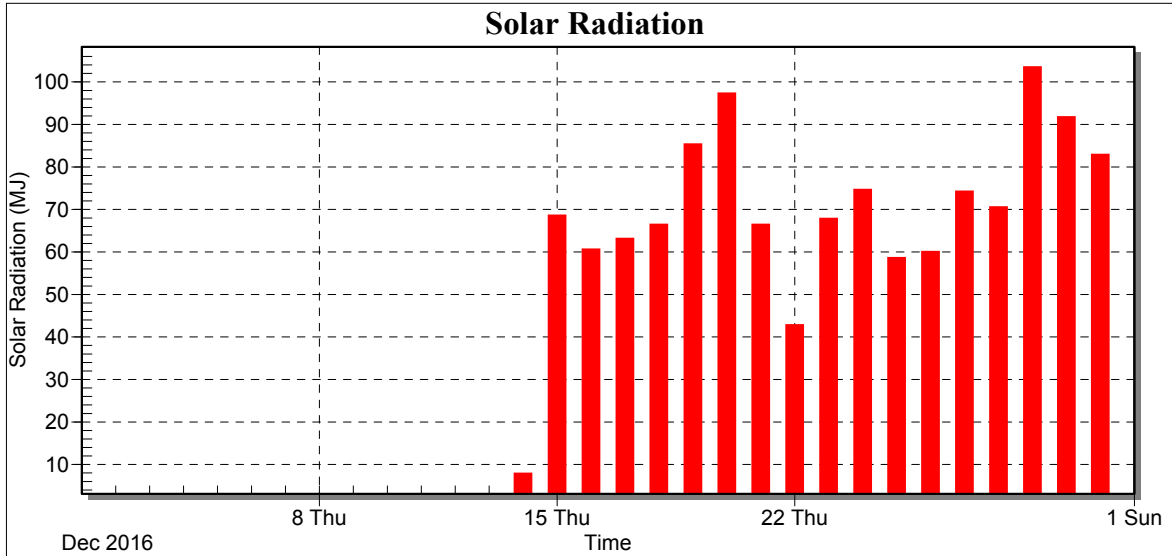
## Weather Station: CEDSA

Location: Villa Lucre

Report Type: 1 Month

Created: miércoles, 01 de marzo de 2017 7:30 p. m.

Report Period: diciembre 2016



Date	Total Solar Radiation (MJ)
14/12/16	7.89
15/12/16	68.57
16/12/16	60.59
17/12/16	63.13
18/12/16	66.43
19/12/16	85.35
20/12/16	97.31
21/12/16	66.45
22/12/16	42.79
23/12/16	67.84
24/12/16	74.63
25/12/16	58.60
26/12/16	60.04
27/12/16	74.24
28/12/16	70.56
29/12/16	103.50
30/12/16	91.73
31/12/16	82.88
Low	7.89
High	103.50
Average	69.03
Std Dev	20.76
Total	1242.53



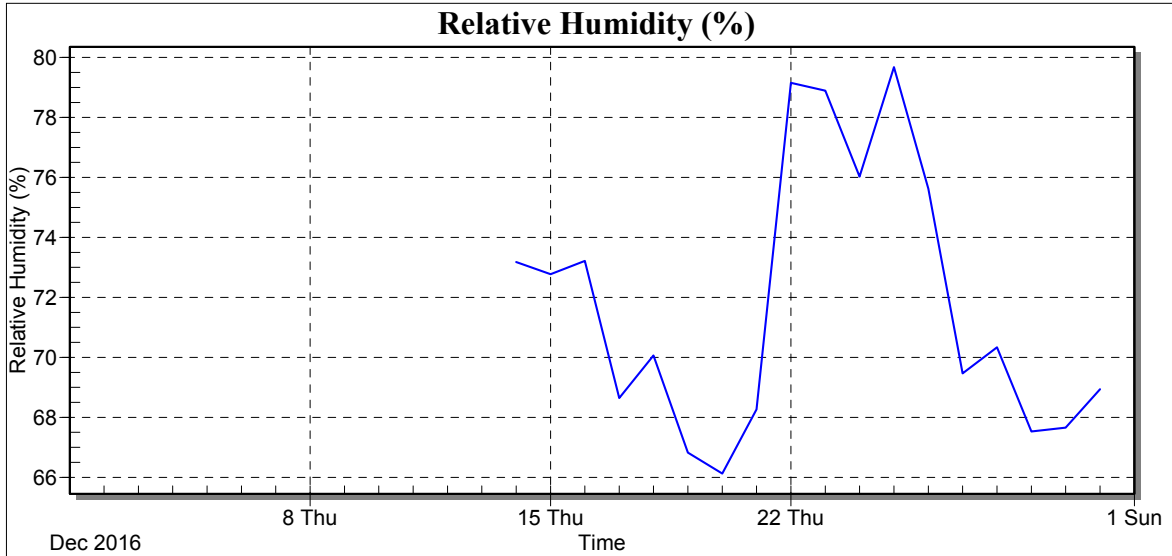
## Weather Station: CEDSA

Location: Villa Lucre

Report Type: 1 Month

Created: miércoles, 01 de marzo de 2017 7:30 p. m.

Report Period: diciembre 2016



Date	RH Avg (%)
14/12/16	73.18
15/12/16	72.77
16/12/16	73.22
17/12/16	68.64
18/12/16	70.07
19/12/16	66.83
20/12/16	66.13
21/12/16	68.27
22/12/16	79.16
23/12/16	78.89
24/12/16	76.03
25/12/16	79.68
26/12/16	75.62
27/12/16	69.47
28/12/16	70.33
29/12/16	67.53
30/12/16	67.66
31/12/16	68.94
Low	66.13
High	79.68
Average	71.80
Std Dev	4.33



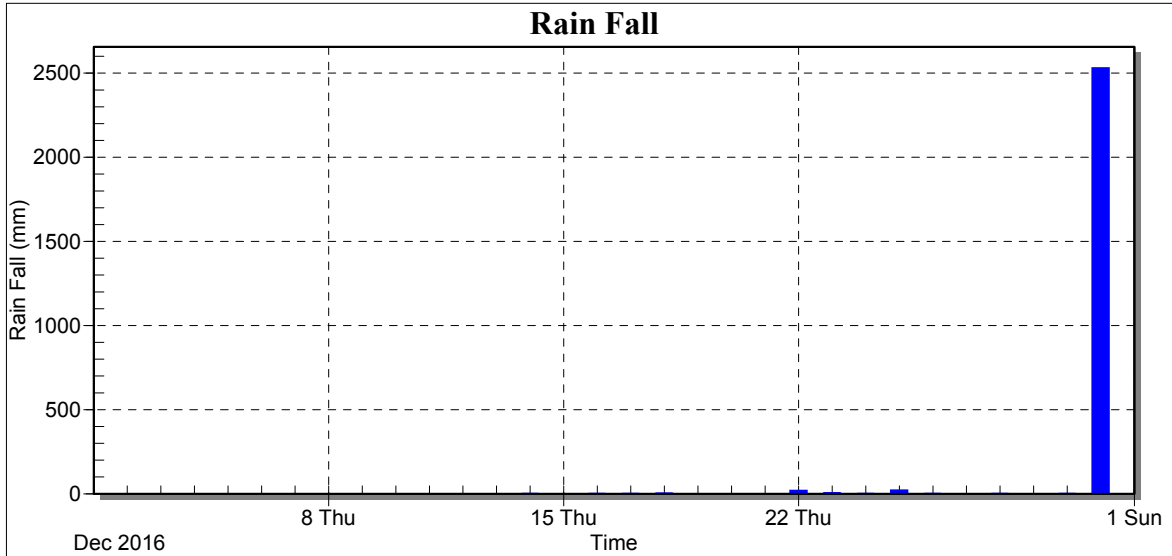
## Weather Station: CEDSA

Location: Villa Lucre

Report Type: 1 Month

Created: miércoles, 01 de marzo de 2017 7:30 p. m.

Report Period: diciembre 2016



Date	Rain Fall (mm)
14/12/16	0.01
15/12/16	0.00
16/12/16	0.05
17/12/16	0.07
18/12/16	1.39
19/12/16	0.00
20/12/16	0.00
21/12/16	0.00
22/12/16	18.70
23/12/16	3.52
24/12/16	0.72
25/12/16	20.34
26/12/16	0.06
27/12/16	0.00
28/12/16	0.49
29/12/16	0.00
30/12/16	0.01
31/12/16	2530.38
Low	0.00
High	2530.38
Average	143.10
Std Dev	579.03
Total	2575.74



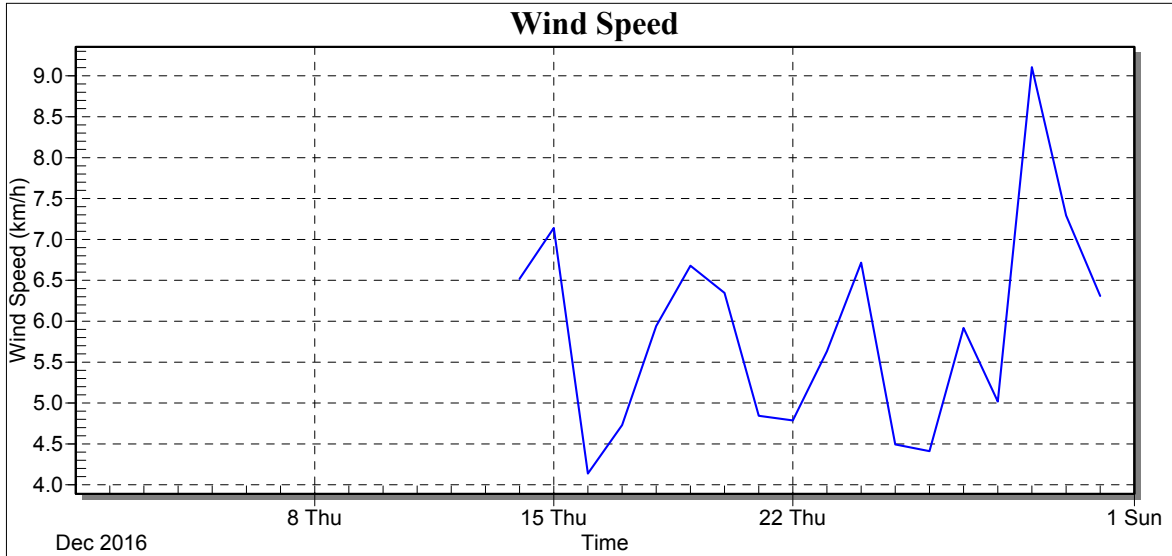
## Weather Station: CEDSA

Location: Villa Lucre

Report Type: 1 Month

Created: miércoles, 01 de marzo de 2017 7:30 p. m.

Report Period: diciembre 2016



Date	Wind Speed Avg (km/h)
14/12/16	6.52
15/12/16	7.14
16/12/16	4.14
17/12/16	4.73
18/12/16	5.94
19/12/16	6.68
20/12/16	6.35
21/12/16	4.84
22/12/16	4.79
23/12/16	5.63
24/12/16	6.72
25/12/16	4.49
26/12/16	4.41
27/12/16	5.92
28/12/16	5.02
29/12/16	9.11
30/12/16	7.29
31/12/16	6.31
Low	4.14
High	9.11
Average	5.89
Std Dev	1.24



## Weather Station: CEDSA

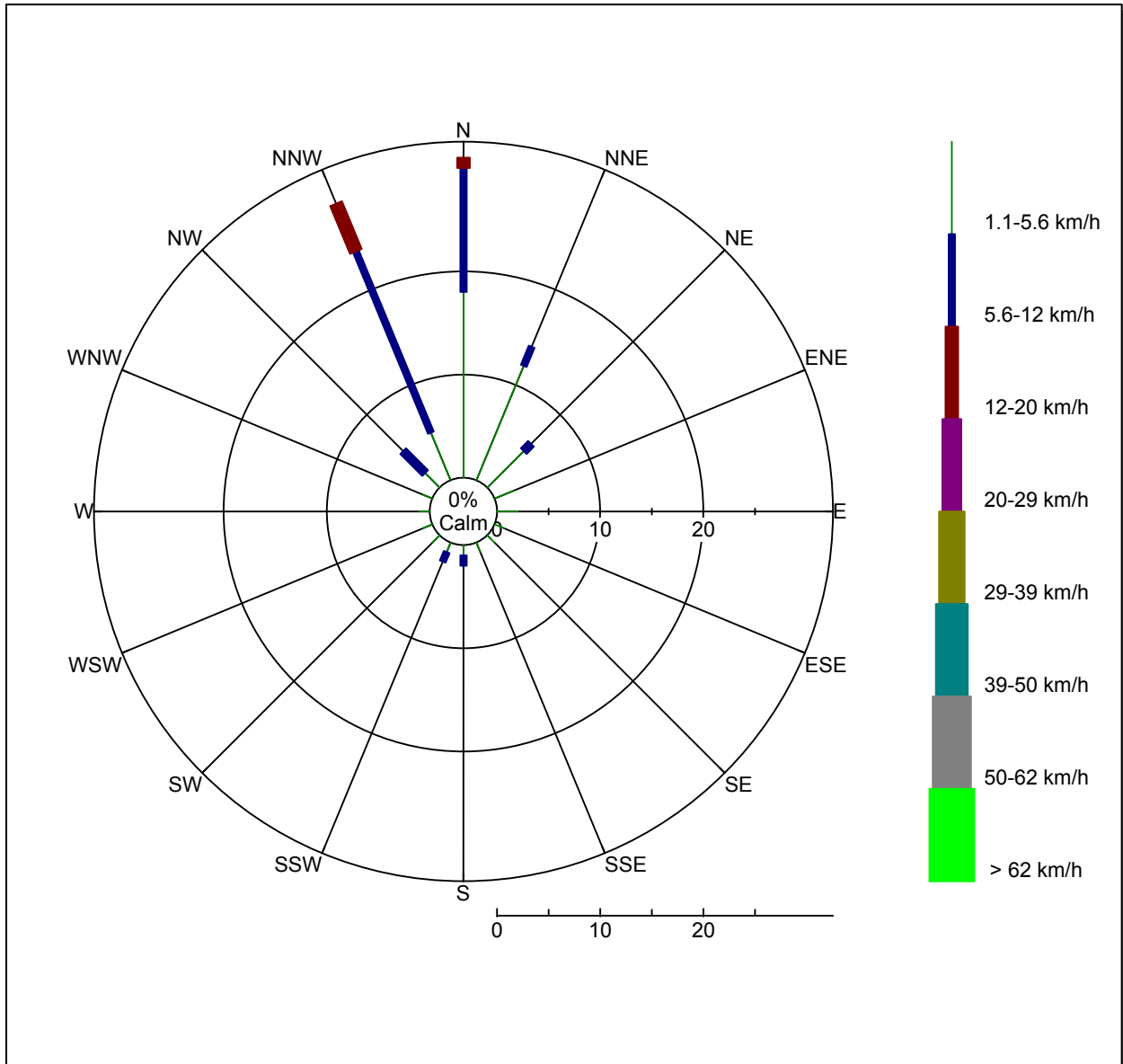
Location: Villa Lucre

Report Type: 1 Month

Created: miércoles, 01 de marzo de 2017 7:30 p. m.

Report Period: diciembre 2016

## Wind Rose





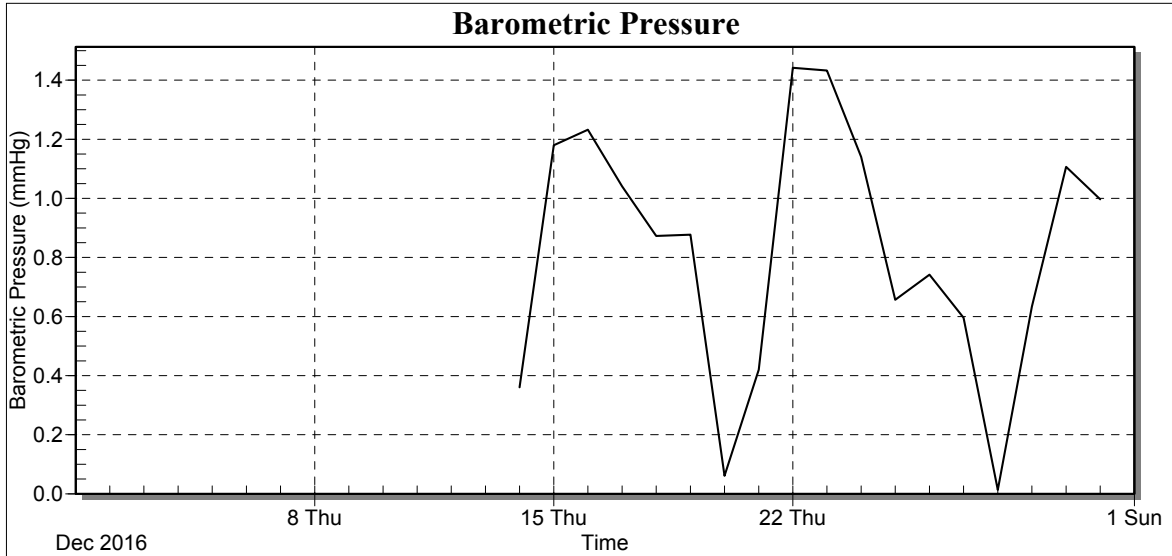
## Weather Station: CEDSA

Location: Villa Lucre

Report Type: 1 Month

Created: miércoles, 01 de marzo de 2017 7:30 p. m.

Report Period: diciembre 2016



Date	Avg BP (mmHg)
14/12/16	0.36
15/12/16	1.18
16/12/16	1.23
17/12/16	1.04
18/12/16	0.87
19/12/16	0.88
20/12/16	0.06
21/12/16	0.42
22/12/16	1.44
23/12/16	1.43
24/12/16	1.14
25/12/16	0.66
26/12/16	0.74
27/12/16	0.60
28/12/16	0.01
29/12/16	0.63
30/12/16	1.11
31/12/16	1.00
Low	0.01
High	1.44
Average	0.82
Std Dev	0.41